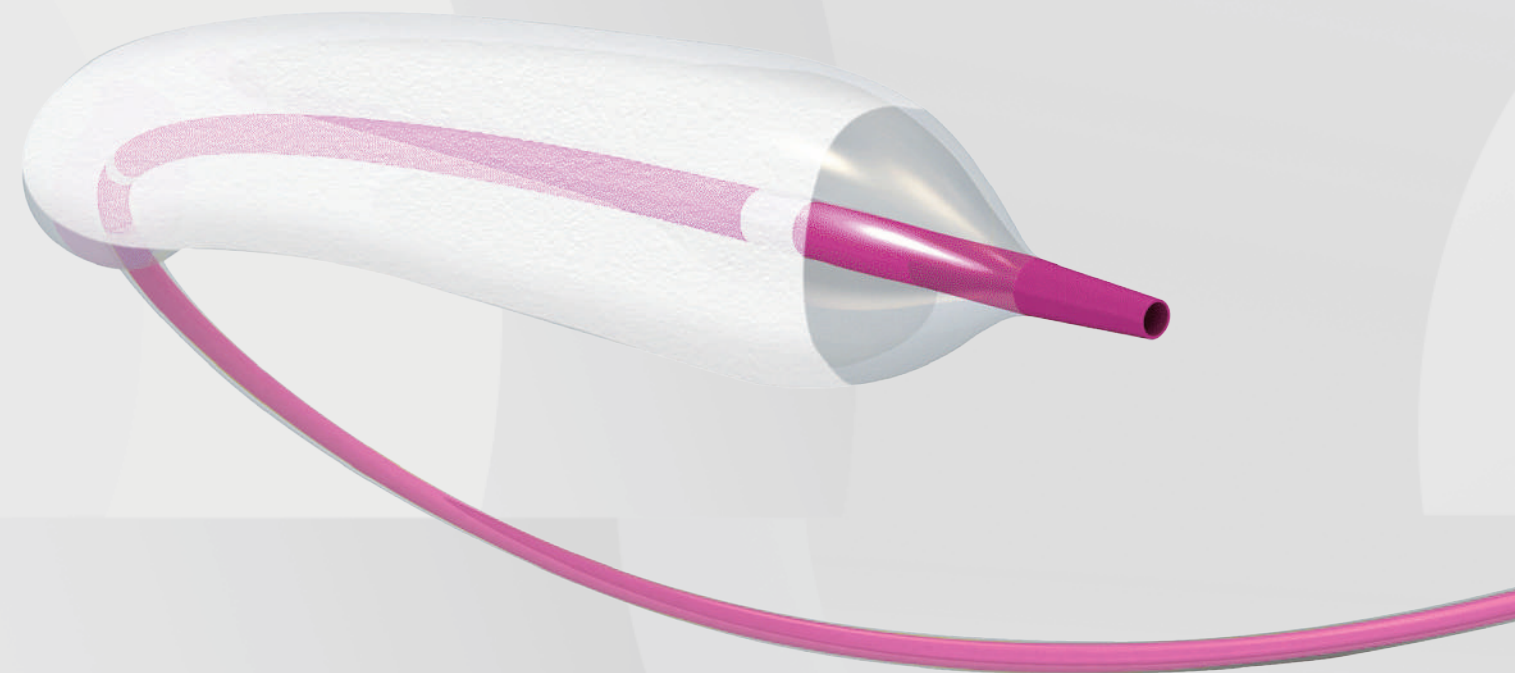


## ( Size Matrix )

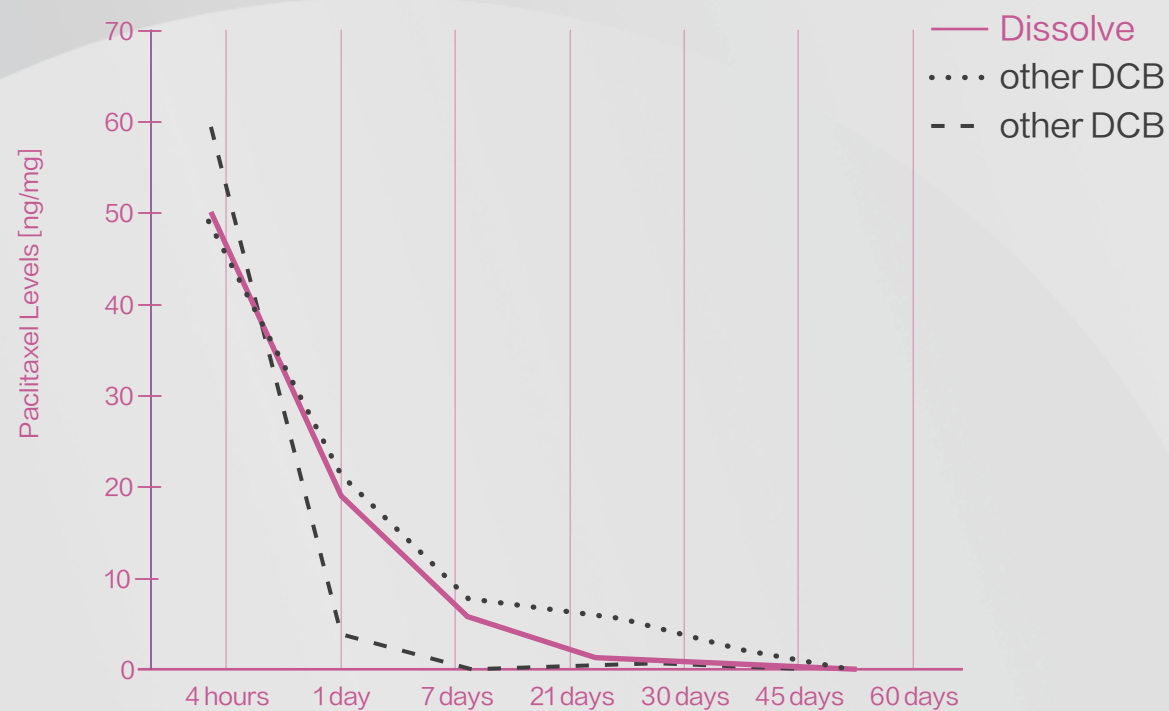
Balloon Diameter	Balloon Length					
	10mm	15mm	20mm	25mm	30mm	35mm
2.00mm	DCB-2010	DCB-2015	DCB-2020	DCB-2025	DCB-2030	DCB-2035
2.25mm	DCB-2210	DCB-2215	DCB-2220	DCB-2225	DCB-2230	DCB-2235
2.50mm	DCB-2510	DCB-2515	DCB-2520	DCB-2525	DCB-2530	DCB-2535
2.75mm	DCB-2710	DCB-2715	DCB-2720	DCB-2725	DCB-2730	DCB-2735
3.00mm	DCB-3010	DCB-3015	DCB-3020	DCB-3025	DCB-3030	DCB-3035
3.50mm	DCB-3510	DCB-3515	DCB-3520	DCB-3525	DCB-3530	DCB-3535
4.00mm	DCB-4010	DCB-4015	DCB-4020	DCB-4025	DCB-4030	DCB-4035

## ( Technical Specifications )

Catheter Design	Rapid Exchange (Rx)	Tip Entry Profile	0.016"
Nominal Pressure (NP)	10atm	Guidewire Compatibility	0.014"
Rated Burst Pressure (RBP)	16atm	Guiding Catheter	6F(0.066")



## > OPTIMAL DRUG TRANSFER



Dissolve™ Coronary Drug Coated Balloon

The **only** DCB indicated for ISR & SVD\*

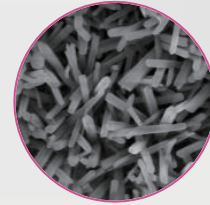
\*Indication under NMPA approval 20213031116

1



### Setting the Standard in ISR & Small Vessel Treatment

- Clinically proven to be effective and safe in the treatment of ISR and SVD.

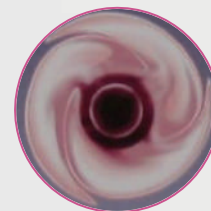


2



### Minimized Drug Loss, Maximum Healing

- Unique excipient to optimize balloon to vessel drug transfer.



3



### Preserving Drug Integrity, Enhancing Deliverability

- Advanced folded balloon technology preserves drug integrity while optimizing crossing efficiency.

